

The background image shows the Max-Schmeling-Halle, a modern building with a large, curved, copper-colored roof and a glass facade. The building is surrounded by lush green trees and foliage. A semi-transparent blue rectangular overlay covers the lower half of the image, containing the title and address text.

Sustainability Management Plan

Status and improvements - 2025

Max-Schmeling-Halle Falkplatz 1, 10437 Berlin

Agenda



1. Energy and water consumption
2. Environmental aspects
3. Sociocultural aspects
4. Quality management
5. Health & safety aspects
6. Sustainability Management Plan
7. Monitoring & auditing
8. Environmental policy



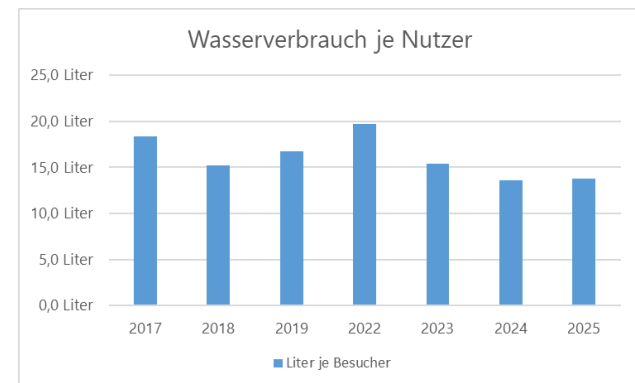
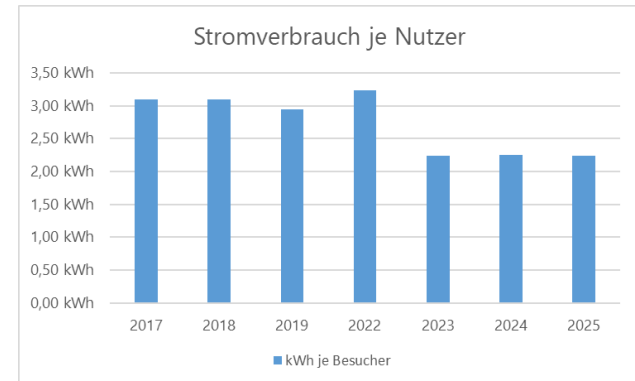
1. Energy and water consumption

Overview, status, outlook

Energy and water consumption – overview

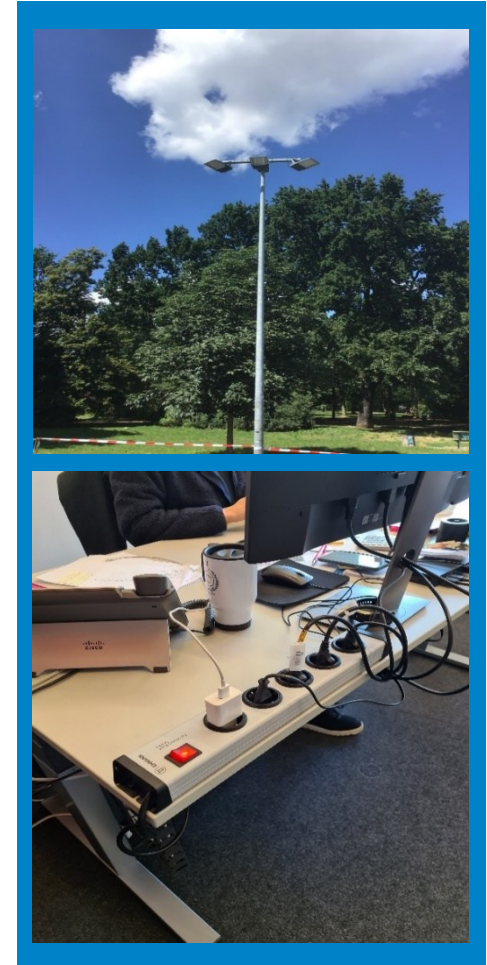
Savings targets

- Electricity and water consumption per user remains at a consistently low level compared to the previous year, despite an increased number of events. This is due to the consistent implementation of energy and water-saving measures (e.g. conversion to LED lighting, restrictions on hot water consumption, temperature reductions in the arena, ancillary halls and management area, use of water-saving aerators, etc.).
- Due to pandemic-related restrictions, the figures for 2020 to 2022 are not usable (decline in users due to various restrictions on use and closures versus base load, implementation of hygiene concepts, deviating ventilation behaviour in this context, necessary flushing in the context of Legionella prevention due to lack of use, etc.).



Energy, heat and water consumption – status and current measures

- Completing the conversion of all ancillary areas and rooms to LED lighting in realisation.
- Conversion of east stairwell to smart LED lighting with presence detectors.
- Conversion of west stairwell to smart LED lighting with presence detectors in preparation.
- Installing socket strips that can be switched off in the entire management area finalised.
- Installing individual heat control options in management rooms finalised.
- Installing floor heating in the dance/ballet area to reduce the required heat energy finalised.
- Converting to cold water only at hand wash basins in visitor areas finalised.



Energy and water consumption – outlook

(subject to possible financing in some cases)

- Implementation of a measurement concept for relevant consumers in accordance with EnMS and differentiation of consumption by area of use. Water and heat meters are fully installed. Electricity meters will follow gradually.
- Renovation of the arena roof with insulation in accordance with current EnEV and expansion of the photovoltaic system. From 2029, own use of the solar panels on the entire roof.
- Construction of protective roofs over skylights as a replacement for renovation. These will later be equipped with glass-glass solar modules. Rainwater will be collected in cisterns and used to irrigate our green spaces.
- District heating connection in 2029.
- Replacement of existing urinals with waterless urinals as a measure to reduce water consumption.
- Renovation of ventilation systems for more energy-efficient operation – in implementation (more efficient motor-fan combination, modern flow-optimised silencers, optimisation of building control centre).
- Networking of temperature sensors for cold storage and deep-freeze rooms with GLT (building management system) for early detection of malfunctions and leaks and subsequent minimisation of the loss of climate-damaging refrigerants.

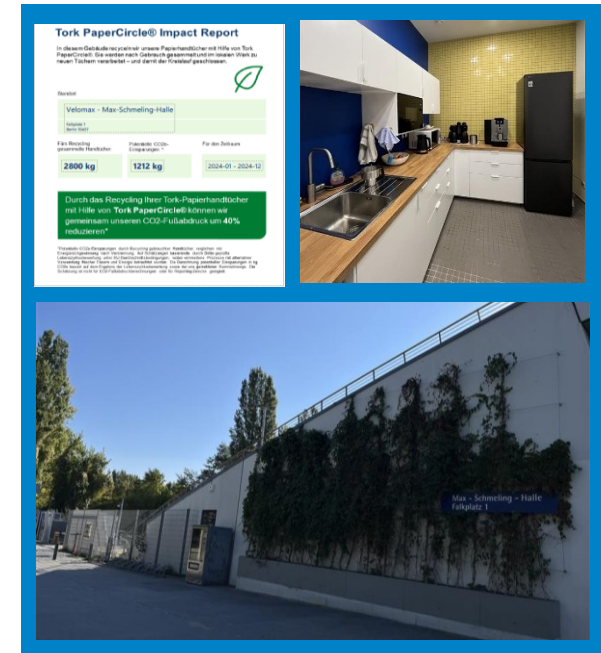


2. Environmental aspects

Status, initiatives, outlook

Environmental aspects – Status

- Installation of the TORK PaperCircle recycling system for all paper towels throughout the Max-Schmeling-Halle since February 2024, including monitoring of recycled quantities.
- Greening of the wall panel next to the BMZ to minimize sports noise for local residents. An expansion of the project “Greening of the north facade with CO2-reducing planting” is in planning.
- Replacement of old appliances in the staff kitchen with new, energy-efficient appliances.
- Installation of a drinking water station in the staff kitchen to avoid the use of returnable bottles for supplying water to employees.



Environmental aspects – Status



- Beekeeping takes place on the roof of the hall. Our bee colonies pollinate wild and cultivated plants and preserve biodiversity.
- As part of the “Gemeinsame Sache” campaign, a wild hedge was planted on the west side of the hall on the recommendation of NABU Berlin.

Environmental aspects – Status



- **Since 2017**, we have been working with bike-sharing partner nextbike. Expansion of bike stations around the Max-Schmeling-Halle and communication for “green travel”.
- **Since 2018**, we have been collaborating with the NGO “Viva Con Agua” at various events and with our anchor tenants.
- We are a founding member of the Sustainability Working Group, or **ak:n** for short. This working group was established in **2019** in cooperation with the Senate Department for Economics, Energy, and Public Enterprises and various members of the Berlin Music Commission.
- **Since 2021**, we have been a co-signatory of “Music Declares Emergency,” a global network of the music industry focused on sustainability and environmental protection.

Sustainable Eventmanagement - Initiatives

- To mark the 30th anniversary of the **Beatsteaks**, Loft Concerts and the Max-Schmeling-Halle set an example for sustainable live events on 13 and 14 June 2025 with 18,000 fans. From green electricity and vegetarian catering to travel by public transport (included in the ticket price), the concerts showed that big shows and responsibility go hand in hand. The aim is to reduce emissions, conserve resources and raise awareness of sustainable alternatives.
- Our **home teams** have made the leap into sustainability, and we support them wherever we can.
- The **Berlin Recycling Volleys** held two sustainable match days (Zero Waste Day, match day with the motto “Get the cycle going”) at the Max-Schmeling-Halle in February and October 2024. The **Füchse Berlin** have been officially certified since the 2022/23 season and are taking a forward-looking approach with their sustainability campaign.



Environmental aspects – Initiatives



- Summer and fall 2025: Meadow mowing again using good sheep from a regional sheep farm. Season opening for children from local daycare centers to welcome the sheep, with explanations by the shepherdess.
- Annual preparation of the MSH climate balance sheet to determine comparative values for measuring the efficiency of future measures.
- Implementation of our sustainability concept and development of future measures to improve the climate balance sheet.

Waste separation and recycling



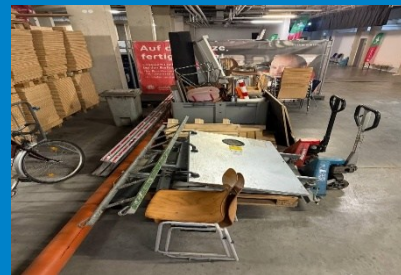
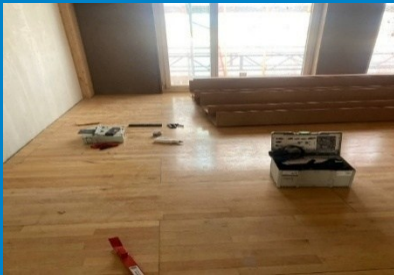
■ There are paper and household waste bins in all staff offices, and waste is separated in the kitchen into:

- paper
- residual waste
- yellow bin
- food waste
- Since 02/2024 TORK PaperCircle (recycling of all paper towels in management and visitor areas)

■ In the catering areas into:

- glass
- paper
- organic waste / grease separator
- yellow bin
- residual waste

Upcycling

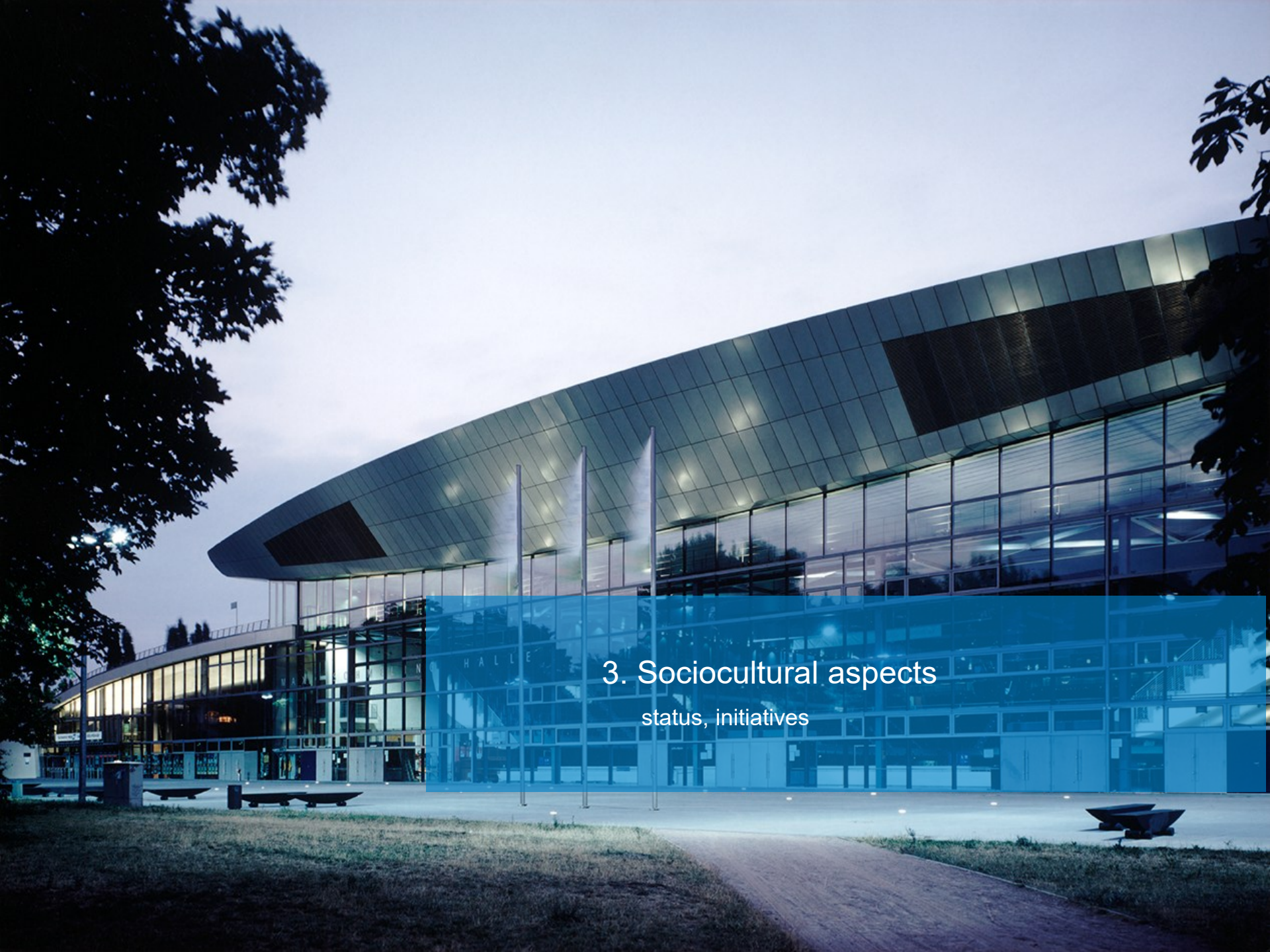


- 500 discarded stacking chairs from the Max-Schmeling-Halle were made available to a non-profit cultural organisation (Kulturkosmos.de) for further use after new seats had been installed in 2023.
- A defective sports parquet floor was reused in a common room in 2023 through refurbishment by a non-profit property developer (TRNSFRM eG).
- Donation of old materials (Molton, scrap metal, wood) to clubs after the end of the season in 2024.
- Donation of waste materials (molton, scrap metal, wood) to the 'Dubstation' collective of Kulturkosmos e.V. in 2025.

Environmental aspects – outlook

- Working groups identify new measures with further savings potential and opportunities to implement proposals from the sustainability concept.
- Ongoing maintenance measures with replacement of existing energy-saving components (e.g. high-efficiency pumps).
- Conversion of ventilation systems:
2025 Replacement of motors and fans in four large ventilation systems with new, more efficient motor-fan combinations.
In 2026, continuation of the renovation work on the ventilation system.
- Review of the introduction and trial run of an electric composting plant for all organic waste.





3. Sociocultural aspects

status, initiatives

Sustainability management – APLEONA



Velomax GmbH is part of the APLEONA Group. APLEONA's sustainability management includes:

- Apleona relies on ESG as its business foundation and pursues clear climate goals.
- Vehicle fleet is being converted to electric drives.
- Office space is used in an energy-efficient and sustainable manner.
- Supply chains are reviewed for CO₂ reduction.
- EcoVadis Platinum certificate confirms high sustainability performance.
- SBTi member with ambitious CO₂ reduction targets by 2033.
- Sustainability report ensures transparency.



„Apleona ensures not only a smooth, but above all a sustainable, CO₂-optimized building operation and thus makes a significant contribution to climate protection.“

Dr. Jochen Keysberg, CEO Apleona Group

Sustainability management – communication



- Revision and expansion of sustainability communication to further raise awareness among customers and visitors, focusing on selected SDGs.
- Development of a new information board for the awareness concept is underway.
- Redesign of our websites and implementation of accessibility to enable easy and equal access for all users.



Educational work & participation



- **Since 2022**, we have been cooperating with the Berlin University of Applied Sciences (BHT) and offering guided tours for students once or twice a year, each of which includes a section on events and sustainability management.
- **Since 2023**, we have been involved with **Berliner Schulpate gGmbH**. In the “Abenteuer Beruf” (Adventure Career) program, elementary school students gain practical insights into various professions. We invite fifth and sixth graders to the Max-Schmeling-Halle and show them the professions behind the operation of the hall.
- **Since 2024**, we have been cooperating with **Berliner Aidshilfe e.V.** to enable seriously ill people to participate in our events. The cooperation with the “Kulturkartenservice” brings joy to those affected and improves their quality of life.



Sociocultural aspects – initiatives



atmosfair

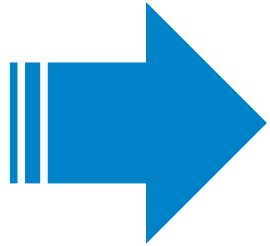
- Compensating CO₂ emissions through business trips of the Velomax company.
- Protecting the climate through support for various environmental projects (see cooperation partners).
- Restricting air travel as far as possible
> avoiding instead of offsetting.



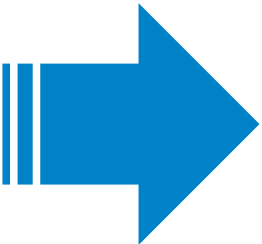
4. Quality management

Status, improvements

QM – status and improvements



- Carrying out regular evacuation exercises.
- The process management and documentation for construction projects was developed and implemented as part of maintenance and modernisation work.
- The installation of digital signage was finalised.
- A feasibility study for special uses of ancillary halls (e.g. safety-related planning of visitor capacities) has been carried out and transferred to an ongoing process.
- Relaunch of the websites with the installation of Eye-Able to introduce accessibility to our websites.



- Customer surveys are conducted online using MS Forms.
- Customer feedback is forwarded to the scheduling department.
- Customer feedback is systematically recorded.
- Optimisation of visitor surveys during events and expansion of the participant group through access to the questionnaire via QR code.
- Evaluation and follow-up actions are recorded.
- Customer feedback is presented at management meetings and measures are defined.
- Certified according to the environmental standard ISO 14001 and management system DIN EN ISO 50001.

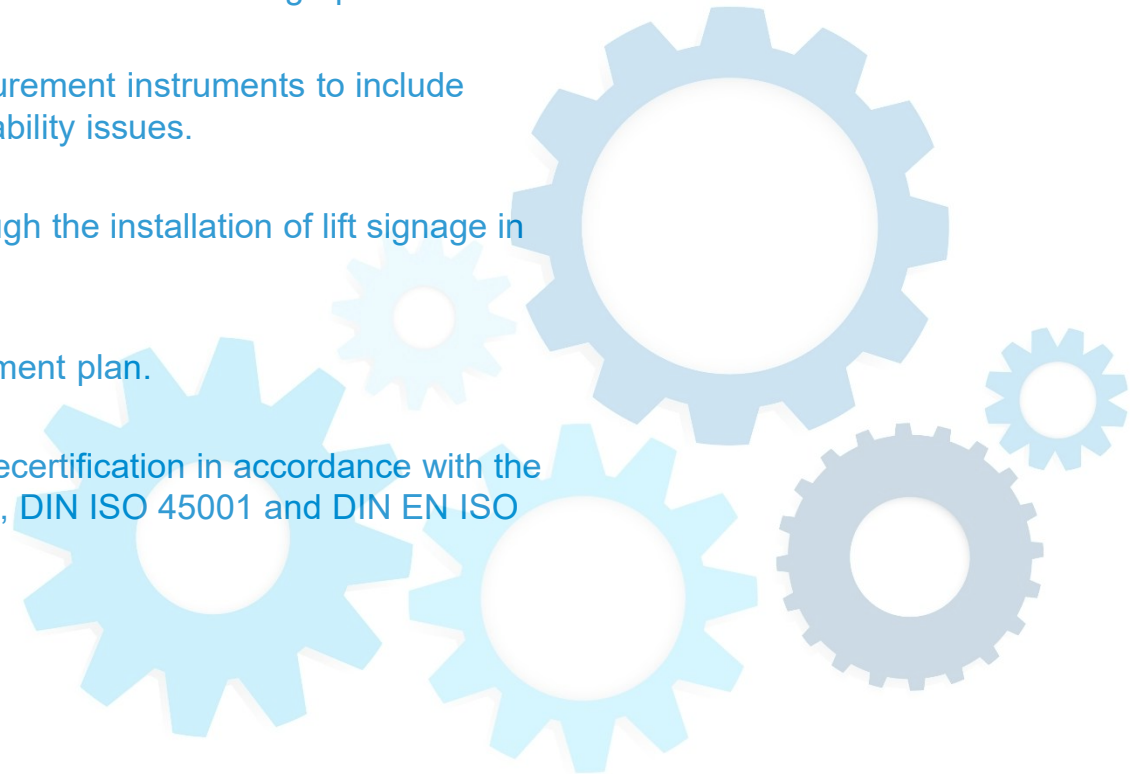
QM – status and improvements

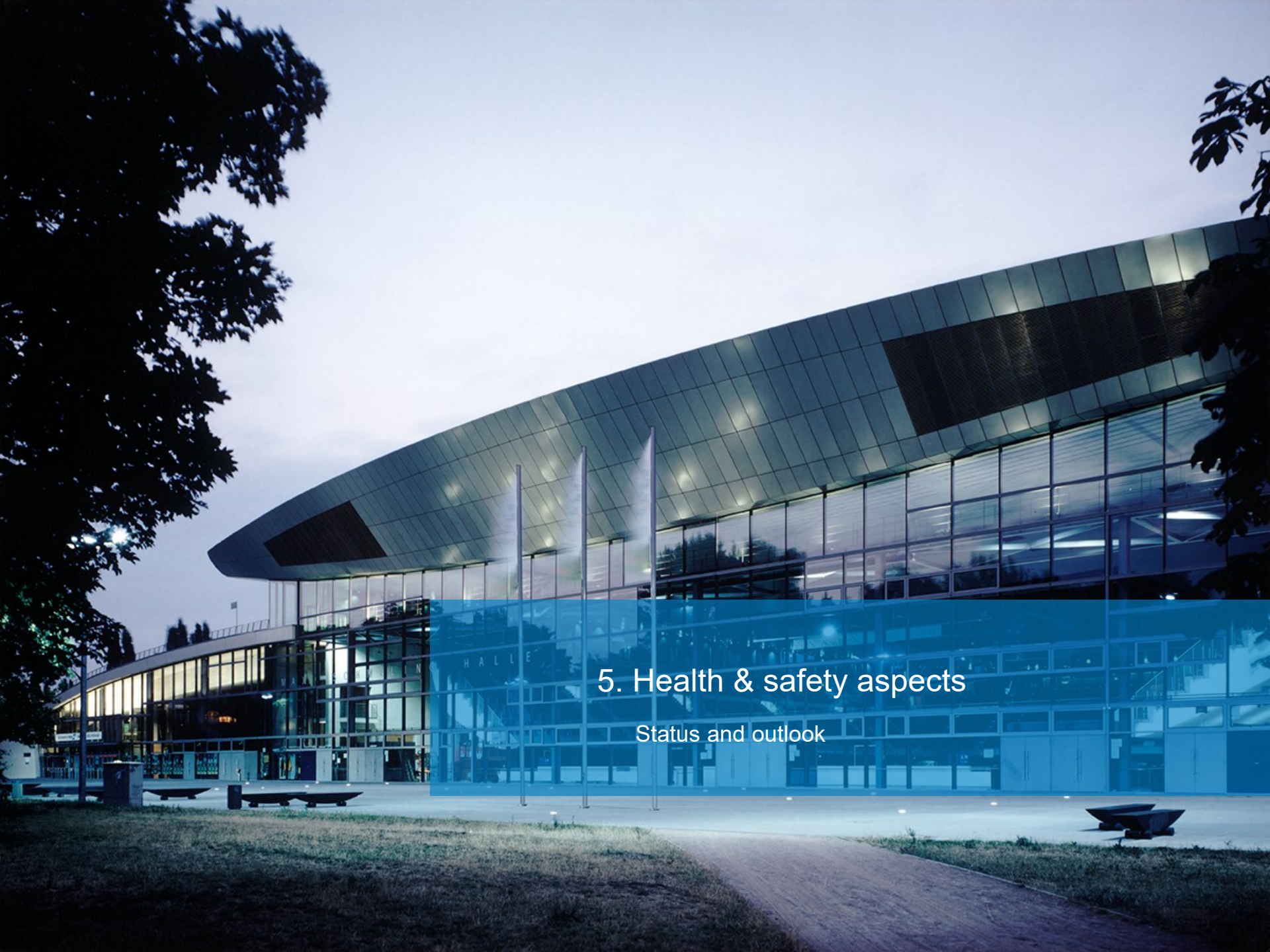
- Ongoing supplier evaluations are carried out in the central purchasing system Newtron.
- Coordination with service providers to improve visitor-related services based on the results of visitor feedback.
- Instructions are given exclusively online to save resources.
- Maintaining an integrated management system with standardised mapping of the structures of the DIN EN ISO 9001, DIN EN ISO 14001 and DIN ISO 45001 standards and DIN EN ISO 50001.



QM – Goals and outlook

- Optimisation of the flow and scope of information for visitors and customers through digital signage and the creation of additional infographics.
- Expansion of customer-specific measurement instruments to include questions on the relevance of sustainability issues.
- Expansion of barrier-free access through the installation of lift signage in Braille.
- Revision of lost property and management plan.
- Ongoing preparations for successful recertification in accordance with the DIN EN ISO 9001, DIN EN ISO 14001, DIN ISO 45001 and DIN EN ISO 50001 standards.





5. Health & safety aspects

Status and outlook

Health & safety aspects - Status

- Continuous development of event-ready safety concepts for employees, visitors and secondary hall users.
- Implementation of measures to improve safety when handling cash reserves.
- Updating of the risk assessment for handling industrial trucks, including adaptation of new instructions and training.
- Expansion of the recording and processing of near misses.
- Purchase of digital equipment to monitor hygiene standards in hall catering in accordance with HACCP.
- Implementation of company-wide digital health days for all employees with lectures on various health topics.
- Adaptation of ergonomic office furniture.
- Successful team participation in the BR Volleys beach volleyball tournament 2025.





6. Sustainability Management Plan

Sustainability Management Plan – overview

- The sustainability management system is integrated into the existing management system.
- The supplier management is continued; supplier listing is continuously monitored, platinum status of the Group of companies' certificate as part of EcoVadis.
- The effectiveness of the sustainability management system is monitored by an ISO 14001 external audit.
- Sustainability criteria are taken into account in QM audit planning.
- The energy management system is maintained.
- The Green Globe certification is maintained.



7. Monitoring & auditing



Monitoring & auditing – overview of certifications

Sustainability

- Green Globe 2024 – certification has been confirmed, certificate has platinum status
- Green Globe 2025 – recertification is being sought
- DIN EN ISO 14001:2015 (Environment) – in 2025 recertification, valid until 2028





Monitoring & auditing – overview of certifications

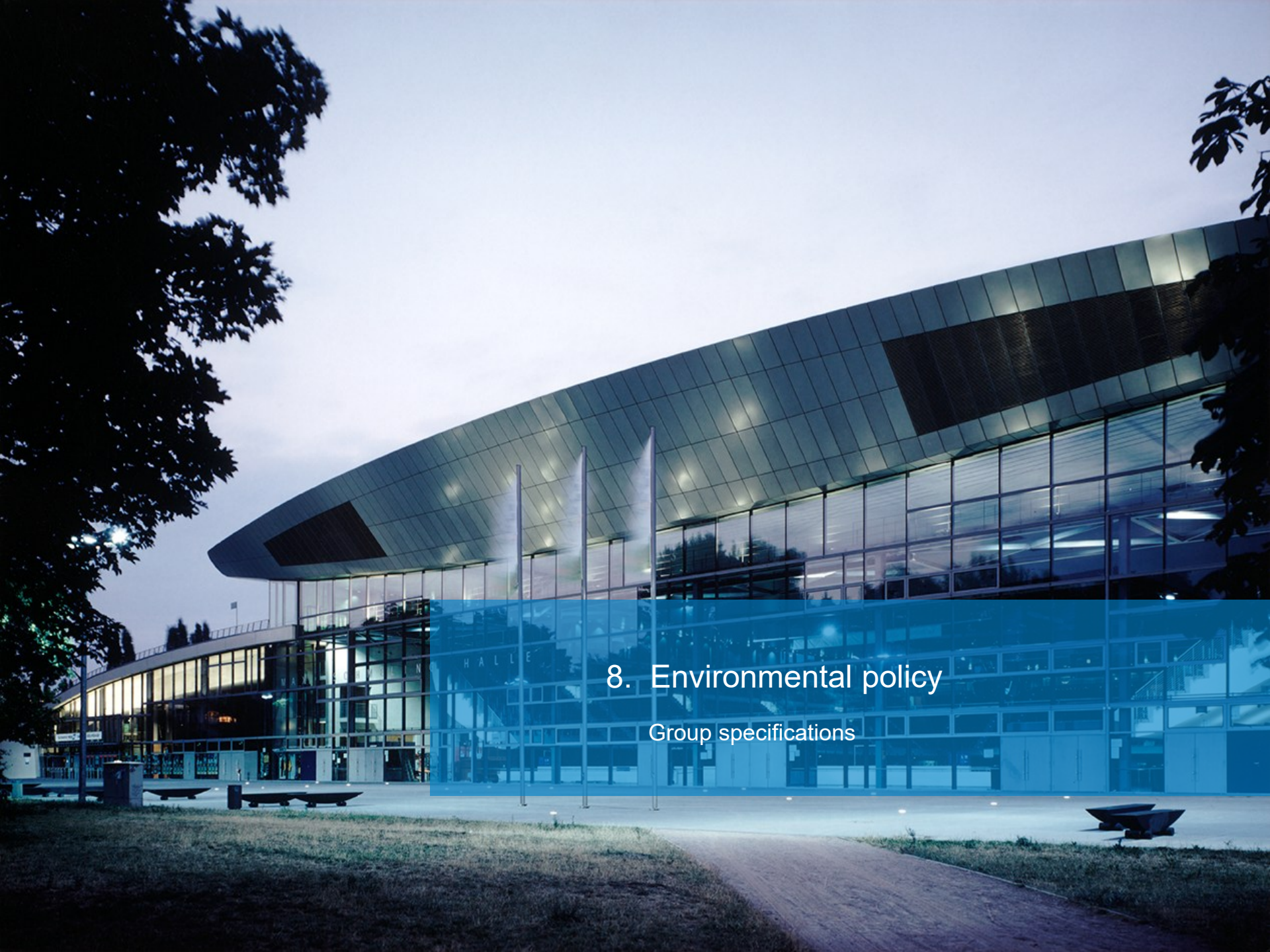
Environmental aspects

- DIN EN ISO 50001 (Energy management system)
 - in February 2025; valid until 2028

Quality aspects

- DIN EN ISO 9001 (Quality management system)
 - in February 2025; valid until 2028





8. Environmental policy

Group specifications

Environmental policy

- Complying with all applicable legal regulations.
- Reducing the use of substances hazardous to health and the environment.
- Reducing costs through separate waste disposal.
- Reducing energy and water consumption.
- Returning packaging materials to a recycling cycle.
- Ensuring emergency preparedness.
- Strengthening environmental commitment.
- Reducing the liability risk.
- Informing and training employees.
- Maintaining an objective dialogue with our clients and the public.

Sustainability Management Plan of Velomax Berlin Hallenbetriebs GmbH

reviewed and approved:

Berlin, 15 October 2025

Two handwritten signatures in blue ink are shown. The first signature on the left is "Hans ZB" and the second signature on the right is "Grit Franke".

Management Board